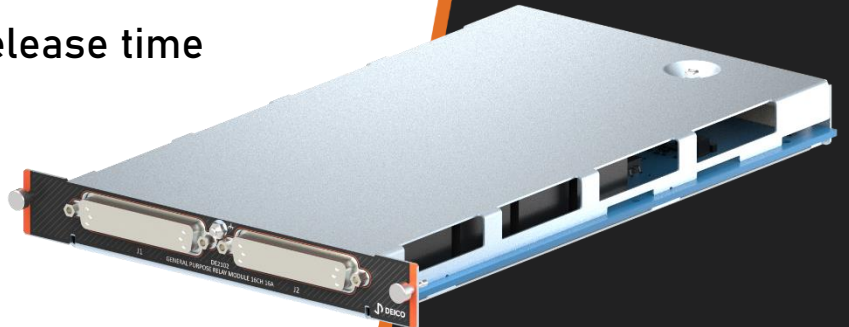


DE2102

GENERAL PURPOSE

MULTIPLEXER MODULE 16CH 16A

- 16 channel SPST EMR switching
- High power relay module
- 300VDC or 440VAC switching voltage
- 16A switching current
- Max 100mΩ contact resistance
- 15ms operate and 5ms release time
- Hot or cold switching



✉ support@deico.com.tr
☎ +90 312 395 68 44
🌐 www.deico.com.tr

 **DEICO**